



**LEGEND**

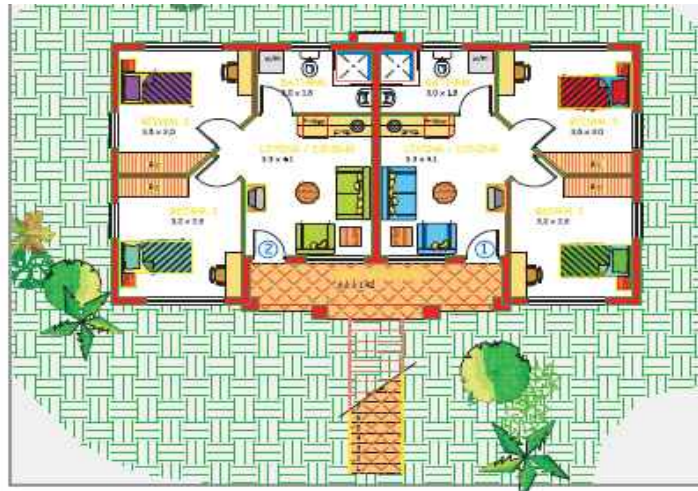
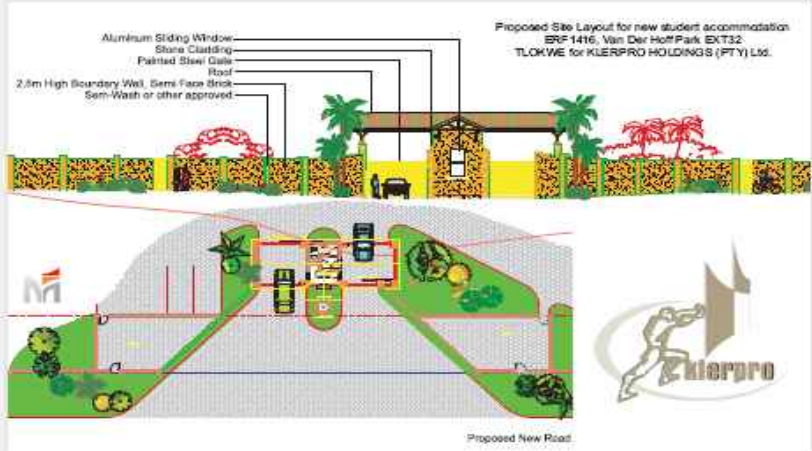
- HIGH LEVEL INDIGENOUS TREES**
  - Acacia grahamii
  - Acacia karoo
  - Acacia salomonii
  - Ficus thicketii
- MEDIUM LEVEL SHRUBS**
  - Agave attenuata
  - Acacia caffra
  - Chenopodium album
  - Impatiens capensis
  - Rhus leptodermis
- LOW LEVEL SHRUBS**
  - Rhoeo spathulata
  - Cosmos bipinnatus
  - Eranthis sp.
  - Helianthus annuus
  - Greenia cordata
  - Diaprepes repens
- GROUND COVERING**
  - Blechnum sp.
  - Agapanthus sp.
  - Heliconia sp.
  - Dianthus sp.
  - Artemisia sp.
  - Malva sp.
- PAVING TO SPEC.**
- LAWN**

**LANDSCAPING NOTES**

- LANDSCAPING TO BE EXECUTED BY A COMPETENT LANDSCAPE ARCHITECT / LANDSCAPER.
- LANDSCAPING TO COUNCIL SATISFACTION.

<p><b>SJR ASSOCIATES</b> Professional Architects</p> <p>Sieg J van Rensburg S.A.C.A.P. Reg No: 6077</p> <p>Montague Centre 111 Glen St Johannesburg</p> <p>Montague Centre P.O. Box 960 Wageningen 0154</p> <p>Tel/Fax: 011 765 2460</p>	<p><b>MIDDLE Sky</b></p> <p>Pierre Nijssen 085 006 0000 Fax: 085 007 6470</p> <p>pnie@middle.co.za</p>	<p><b>Klerpro</b></p>
--	--	-----------------------





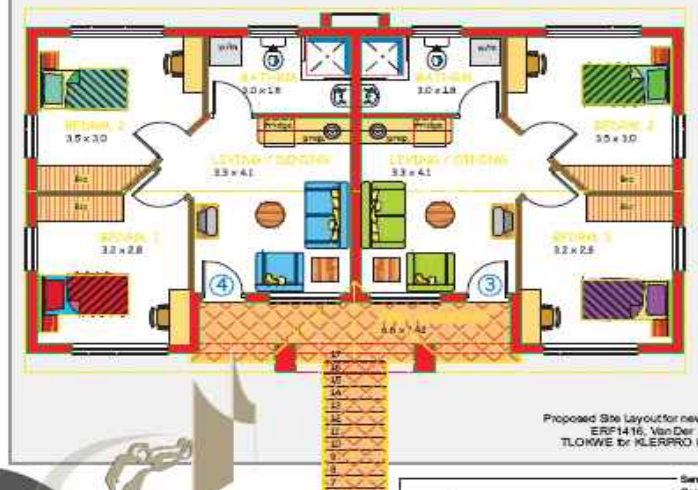
**BLOCK B (2 Bedroom)**

**GROUND FLOOR PLAN**  
Scale: 1:100

Area of Block:  
Ground Floor = 98.3m<sup>2</sup>  
Covered Walkway = 10.2m<sup>2</sup>  
First Floor = 98.3m<sup>2</sup>  
Covered Walkway = 10.2m<sup>2</sup>  
Total = 217.0m<sup>2</sup>

Staircase = 8.0m<sup>2</sup>

Area of Unit = 49.2m<sup>2</sup>  
Carport = 12.5m<sup>2</sup>



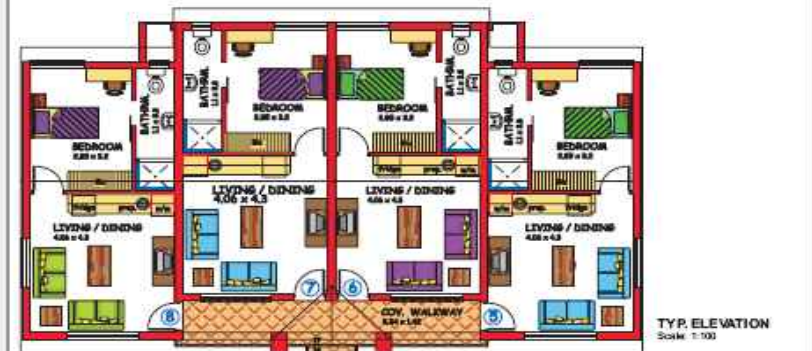
**BLOCK B (2 Bedroom)**

**FIRST FLOOR PLAN**  
Scale: 1:100

Area of Block:  
Ground Floor = 98.3m<sup>2</sup>  
Covered Walkway = 10.2m<sup>2</sup>  
First Floor = 98.3m<sup>2</sup>  
Covered Walkway = 10.2m<sup>2</sup>  
Total = 217.0m<sup>2</sup>

Staircase = 8.0m<sup>2</sup>

Area of Unit = 49.2m<sup>2</sup>  
Carport = 12.5m<sup>2</sup>



**BLOCK A (1 Bedroom)**

**FIRST FLOOR PLAN**  
Scale: 1:100

Area of Block = 150.5m<sup>2</sup>  
Ground Floor = 12.7m<sup>2</sup>  
Cov. Walkway = 150.5m<sup>2</sup>  
First Floor = 12.7m<sup>2</sup>  
Cov. Walkway = 328.4m<sup>2</sup>  
Total = 8.0m<sup>2</sup>

Staircase = 8.0m<sup>2</sup>

Area of Unit = 37.6m<sup>2</sup>  
Carport = 12.5m<sup>2</sup>

